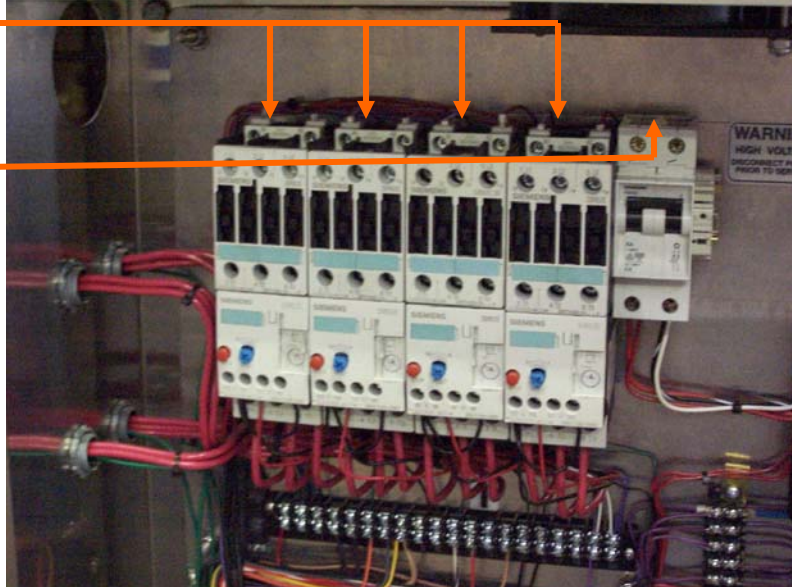


Extreme Wash - II Electrical Connections. (Typical)

1. Electrical connections:

- a. Each contactor/ overload (per bay) will require 3-phase line from the site's electrical/breaker panel.
- b. 208/240V-1 Phase AC Connection to 10 Amp breaker.



Note: 5 HP motors will require 20A service to each motor contactor.

(Typical Extreme Wash – II Electrical connections, 4- Bay shown here.)

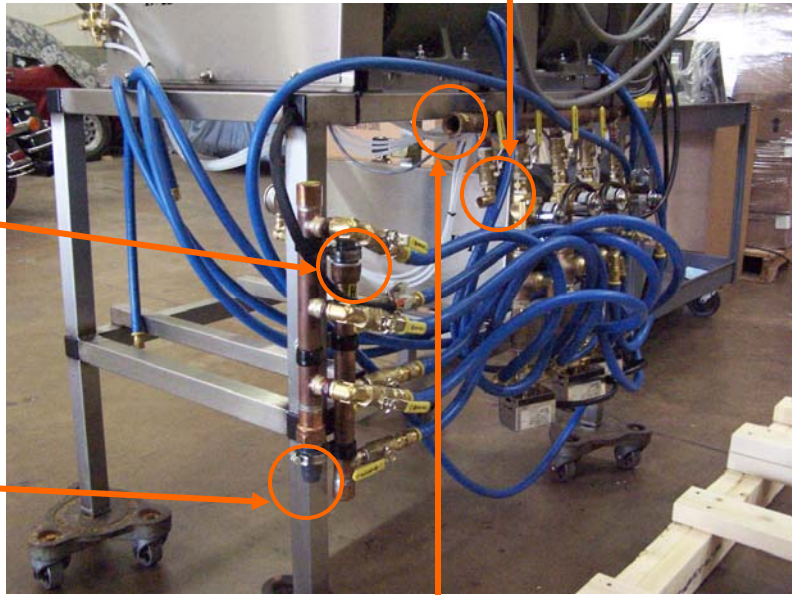
2. Water Connections:

Shown with Optional Medium Pressure Spot Free Rinse. 3 Bay System shown.

Connection to Tank hydrominders.

Hot Water Connection from Extreme Wash Tank Stand Standard EW-II= below Cold Water Rinse manifold.

R.O. Gravity tank Connection



Cold Water Rinse manifold = Cold, Soft Pressurized Water connection from Water Softener.